

Supplementary file for: Inferring Unseen Views of People

Chao-Yeh Chen and Kristen Grauman
University of Texas at Austin

chaoyeh@cs.utexas.edu, grauman@cs.utexas.edu

1. Visualization of inferred views

Figure 1 shows more visualization results of inferred views in IXMAS. For each row, the HOG of pose from a single view is given and our approach inferred the pose for other four views (similar to Figure 4(b) in paper).

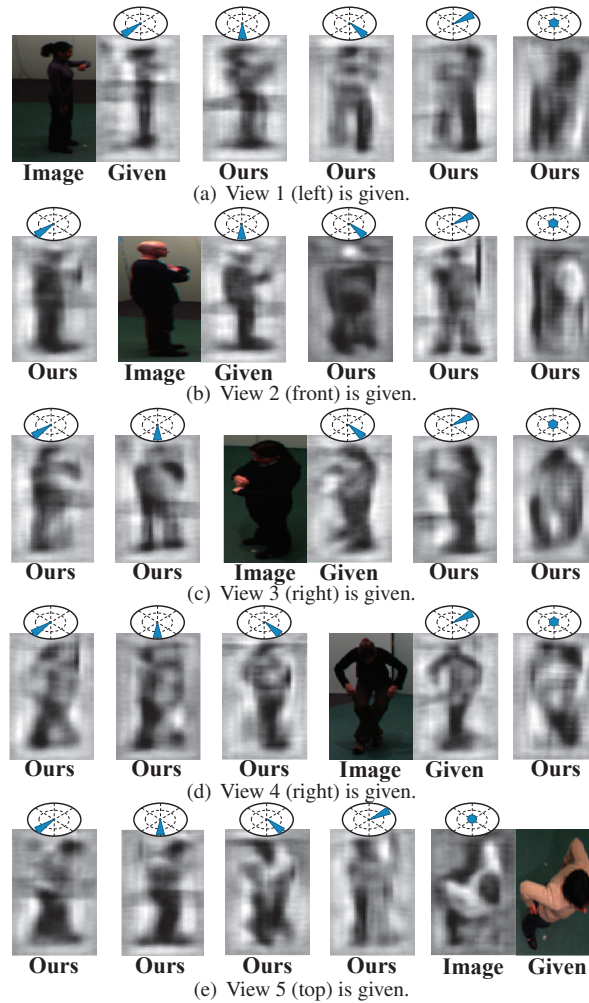


Figure 1. Visualization of inferred views using inverted HOGs in IXMAS. Best viewed on pdf.